

Memorial for Rev. Moses Merrill and his wife Eliza

A MEMORIAL
FOR
REV. MOSES MERRILL,
AND HIS WIFE,
ELIZA (WILCOX) MERRILL,
MISSIONARIES OF THE
AMERICAN BAPTIST MISSIONARY UNION,
TO THE OTOES,
IN INDIAN TERRITORY (NOW NEBRASKA), AT BELLEVUE AND THE
PLATTE RIVER, SIX MILES FROM ITS MOUTH,
FROM 1833 TO 1840.

EXPLANATORY NOTICE.

The accompanying translation of Scripture into the language of the Otoe, Iowa and Missouri Indians was the work of Rev. Moses Merrill. So far as known, at this date, there is but one copy of this translation in existence. That copy is in the possession of Rev. Samuel P. Merrill, at Rochester, N. Y. This son, wishing to honor and perpetuate the names of his father and mother, deemed that he could most gratefully do so, not by monument or epitaph, but by a reprint of the pamphlet page for page which represents so much of the industry and ability of the author, as well as the self-sacrifice of both husband and wife in their philanthropic Christian mission.

PERSONAL SKETCHES.

The REV. MOSES MERRILL was born December 15th, 1803. He was the sixth of thirteen children. His father was Rev. Daniel Merrill, A. M., Revolutionary soldier for three years in the 3d Mass. Infantry, and afterward a graduate from Dartmouth College. His mother was Susannah (Gale) Merrill.

The childhood home until March 1814, of Rev. Moses Merrill, was in Sedgwick, Me., where his father was pastor of the Baptist church. At that date the family removed to Nottingham West (now Hudson), N. H., where his father's ministerial labors were terminated in September, 1820, by recall to the Sedgwick pastorate. His son's school privileges were excellent, and included academy as well as district school instruction. His health, however, was not sufficient to warrant him in pursuing a college course. In appearance he was of florid complexion, rather small of stature, slender in form, neat in person, and somewhat diffident. He was so patient, that it was from this characteristic, noted by the Indians, that he was known to them. He early became a member of the church, and was licensed to preach in April, 1829. His young manhood was spent largely in teaching in or near Sedgwick. April 20th, 1829, he left his home for Albany, N. Y., where he arrived on the 1st of May. Here he taught a select school until the 22d of September, when his effects were destroyed by fire. For a few weeks he conducted an evening school, but this was abandoned on the 16th of October. He then offered himself to the N. Y. Baptist State Convention as a missionary among the Indians

of the State; but no appointment was made. On the 28th of October he set out for Ann Arbor, Michigan Territory, where he arrived November 14th. Here, with an elder brother—Rev. T. W. Merrill—a school was inaugurated, which was quite successful. Frequent preaching tours taught him the need of theological study; and in February, 1830, he gave himself wholly to that and to preaching, preparatory to doing mission work among the Indians. On the 1st of June, 1830, he was joined in marriage to Miss Eliza Wilcox.

MISS ELIZA WILCOX was the eighth child of Brig.-Gen. Silvanus Wilcox, who, during the Revolution was Corporal of Van Rensselaer's Co., Millett's Reg't of the N. Y. S. troops. Miss Wilcox was born in Charleston, Montgomery Co., N. Y., June 3rd, 1800. Her early life was one of comfort and happiness, excepting that she often felt the compunctions of an unredeemed sinner. On the 1st of June, 1823, she experienced religion, and on the 1st of October she was baptized by Elder Calvin Herrick. In joining the Baptist church she left the faith of her mother, because she could find believer's baptism only in the word of God. Her mind was at once turned to the subject of missions. A life of active Christian usefulness alone seemed to satisfy her desires. For a few years she taught school near her home. In 1828 she opened a school in Beaver st., Albany. She soon had upwards of thirty scholars. Here, in the Pearl st. Baptist church, she made the acquaintance of Mrs. Clarissa Heely, daughter of Dea. J. G. Wasson, who, like herself, was anxious to be of benefit to others. On the 1st of December, 1829, in a

cottage on the corner of the Western Turnpike and Snipe st., the two opened what is now known as the Albany Orphan Asylum, and before the following April seventy children had found there a home. Mrs. Heety was the matron, and Miss Wilcox the teacher. The Institution was then removed to what was known as Gallup's Hotel, where it remained three years, and then was taken to its present location. Miss Wilcox's connection with the Asylum terminated the 8th of May, 1830. She, on the 13th of May, left home with her father for La Grange, O., where, at her brother Calvin's house, she was united in marriage with Rev. Moses Merrill, whose acquaintance she had made in Albany the year previous.

THEIR MISSION WORK.

Immediately after their marriage they proceeded to Ann Arbor, where they remained nearly a year. Mr. Merrill preached in regions about his home, and Mrs. Merrill taught school. In the spring of 1831 they removed to English Prairie, Ind. Here a Sunday school was formed and a Temperance Society of thirty members instituted. Here July 25th was born their first child, Moses Daniel Merrill, now resident in St. Paul, Minn. Mrs. Merrill soon after returned to Albany for a few months and busied herself with an effort to establish a home for the children of missionaries. Meantime her husband spent some months at Carey and Thomas Station Indian Missions. A correspondence with the Baptist Missionary Union was followed by the appointment of Mr. and Mrs. Merrill as Missionaries at Sault

St. Marie. There they went in the fall of 1832; reaching the station September 20th. With them went the prayers and sympathies of the brethren in Sedgwick, Me., where they had spent a portion of this summer previous to and following ordination to the work. The ensuing spring they were expected by the Board to settle with the Chippewas at the head of Lake Superior. Before spring this plan was changed, and they were designated to go to the Shawanae Mission, Mo. After a brief stay there and a prospecting tour by Mr. Merrill, the Missionary family, on the 26th of October, 1833, set out for Bellevue, Ind. Ter., (now Nebraska) 200 miles from any white settlement. This place, on the Missouri, near the mouth of the platte river, they reached after severe hardships on the 19th of Nov. (A beautiful view of this Mission station may be found among the costly plates of the illustrated Volume of Travels by Maximillian, Prince of Weid.) A school for Indian children was at once opened. Preaching by an interpreter speedily followed. The language was rapidly learned and reduced to writing. The Indians were visited, counseled, fed, befriended. Along with the gospel they were offered the best medical treatment Mr. Merrill could give.

The work of 1834, with the daily routine heretofore named, consisted in preparing an Otoe spelling book, a reading book making thirty pages duodecimo, and a hymn book. Also a manuscript for a second Otoe reading book. The Indians soon learned to sing the hymns of the little hymn book, WDTWHTL WDWDLHA EYA WDHONETL, 1834. J. Meeker, Printer.

The work of 1835 (teaching, reading to the Indians, preaching, visiting, ministering, etc., understood), was the removal of the Otoes to their new location, six miles from the mouth of the Platte river, on its northern bank. Here, in June, was built their village. On the 13th of July, at Bellevue, the second son was born, Samuel Pearce Merrill, who writes this memorial. September 18th the Mission family removed from Bellevue, six miles to the vicinity of the new Otoe village, into a log house sixteen ft. square, just completed. Meanwhile another and larger house was under way, and the Mission family occupied that the 4th of December.

In 1836 the general work is like that gone before, only more difficult and pressing. On the 14th of August was held the first exercise in Otoe at the school house. Quite well attended meetings occurred in Indian lodges.

Similarly occupied was the year 1837. The translation and publication of this pamphlet of Scripture was effected in June. On July 24th the first address to the Indians in Otoe was given. The completion of the additional mission buildings occupied some time.

The year 1838 did not vary much from these preceding. Some Indians had learned to read, the christian hymns were sung, but nothing further appeared than a growing knowledge of the truth. Mr. Merrill spent several weeks, from June onward, with the Otoes on their buffalo hunt. The seeds of disease (consumption) were there ripened. In 1839, with declining health, with greater turbulence on the part of the In-

dians, little result religiously was effected. On the 6th of February, 1840, the spirit of this man of God passed from earth. His last words were that someone might be sent to take his place and lead those Indians to Christ. The Otoes who knew him as "The-one-who-always-speaks-the-truth," enquired if he whom they mourned had not a brother who would come and take his place.

The journal record of hardships, losses, dangers and narrow escapes with life, give reasons enough for the quick termination of this mission by the death of its leader. And the scenes of lust, drunkenness, lawlessness and murder amid which the wife of this Missionary employed herself in teaching these savages were enough to start the stoutest mind from its true centre. Sickness, epidemics, cholera, and drunkenness worst of all, ravaged the tribe during these years. The Missionary was buried on the east bank of the Missouri river, the Rev. John Dunbar, of the Presbyterian Board of Missions, officiating at the funeral.

The widow, after settling up the affairs of the Mission, returned to her friends in the east, paying a visit to Maine, and soon after settling in Albany as a teacher of a select school, May, 1841. In 1842 another orphan asylum effort was undertaken, but soon it was given over into other hands. In 1847, May 20th, in Detroit, Mich., she was united in marriage to Rev. Thomas W. Merrill, of Galesburg. On the 15th of July, 1856, the marriage bond was legally dissolved.

Soon after Mrs. Merrill went to Minnesota with her eldest son. At Cannon Falls in 1855 she pre-empted a land claim—then removed to Hastings, April, 1857. Here she lived, teaching select school, doing mission

work for the Sunday school, giving liberally for the support of the gospel and to found the Baptist University at Hastings. In the fall of 1870 she went to Baxter Springs, Mo., and remained at her own charges a year among the Indians, becoming a member of their church and giving to help build a new meeting-house. She returned to Hastings, and in 1872, with hard-earned means, went east to Adams, N. Y., to make her close of life with her younger son. This place she reached August 29th. Her days were spent in Adams, N. Y., until December, 1873, in Waterville, Me., until the spring of 1879, in Biddeford, Me., until September, 1882. Her life ended Nov. 12th, 1882, at Rochester, N. Y., whither she had removed in September. The repeated shocks sustained amid the wild and threatening experiences of missionary life, together with the effects of several severe and nearly fatal periods of illness, had disturbed her mind. Nevertheless, her zeal for Christian work—her interest for the spiritual welfare of others—her love, and prayer, and effort, for Christ's kingdom experienced no diminution.

A brief illness lasting from Thursday, the 9th, to the morning of Sunday, the 12th of ~~November~~, 1882, terminated her life. As peacefully as a child she fell on sleep at 6.30 A. M. Funeral services were held Tuesday, the 14th, in East Avenue Baptist chapel, with Rev. H. E. Robins, D. D., officiating. The body was left for burial until the next day, the 15th, that the eldest grandson, Edward Wentworth Merrill, who was absent, might look upon the face of the departed one. Since that, on May 21st, 1886, he too has been suddenly called from earth.

9

MERRILL GENEALOGY, RECORD.

[Largely due to the diligent, prolonged, persevering labor and unstinted expenditure of means by General Lewis Merrill, Phila., Pa.]

- 1st. The Emigrant, ²Nathaniel Merrill, settled in Newbury, Mass., 1635.
- 2nd. ⁶Abel, b. 6 Feb. 1644; m. Priscilla Clease, 10 Feb., 1671.
- 3rd. ¹Abel, b. 28 Dec., 1671; m. Abigail Stevens, 19 June, 1694.
- 4th. ⁴Thomas, b. 29 July, 1702; m. Abigail Bartlett, 19 June, 1729.
- 5th. ⁶Thomas, b. 27 Mar., 1739; m. Sarah Friend, 22 Jan., 1762.
- 6th. ²Daniel, b. 18 Mar., 1765; m. 1st, Joanna Colby, 14 Aug., 1792; 2nd, Susanna Gale, 14 Oct., 1794.
- 7th. ⁶Moses, b. 15 Dec., 1803; m. Eliza Wilcox, 1 June, 1830.
- 8th. ¹Moses Daniel, b. 25 July, 1831; m. Emily Jane Hanna, 3 May, 1864.
- 8th. ²Samuel Pearce, b. 13 July, 1835; m. Amanda H. Wentworth, 23 Apr., 1863.
- 9th. ¹Mary Emily, b. 20 Feb., 1871. } Children of
²Moses Daniel, Jr., b. 7 Apr., 1873. } Moses Daniel.
³Tirzah Halicia, b. 2 Mar., 1875. }
- 9th. ¹Edward Wentworth, b. 30 June, 1865; d. 21 May, 1886. } Children of
²Mary, b. 15 Jan., 1876. } Samuel Pearce.
³John, b. 6 Dec., 1880. }

WILCOX GENEALOGY, RECORD.

BY S. P. MERRILL.

- 1st. The Emigrant, William Wilcockson, from St. Albans, Hertfordshire, Eng., by ship Planter, 25 May, 1636; settled at Windsor and then at Stratford, Conn.
- 2nd. ¹Samuel, b. ———; m. Hannah ———, settled at Simsbury, Conn.
- 3rd. ¹Samuel, b. 15 Apr., 1666; m. Mindwell ———.
- 4th. ¹Ephriam, b. 4 Feb., 1707; m. Hannah Hill, of Simsbury.
- 5th. ²Silvanus, b. 14 Nov., 1733; m. Chastina Curtis, of Simsbury.
- 6th. ²Silvanus, b. 26 May, 1762; m. 1st, Sarah Johnson, 28 Apr., 1785; 2nd, Sally Hamilton, 19 Oct., 1831.
- 7th. ¹Eliza, b. 3 June, 1800; m. Rev. Moses Merrill, 1st June, 1830.
- 8th. ¹Moses Daniel, } See above, in Merrill
²Samuel Pearce, } Genealogy.

EXPLANATORY:

Figures before *names* signify the number of the child in the family; *b.*—born; *d.*—died; *m.*—married; figures before *lines*—generation including emigrant.

S. P. MERRILL,

Rochester, February 11, 1888.

WDKUNTŁ EEIFA,

CESUS KRYST

WDWDLHA ATVA,

WDHSEKA UKEWYGLHCE ATVAKINEITLNL

WOWDKOWIKA.

MARIN

WDTOTŁ WDKWNGA ATVA.

1837.

THE HISTORY
OF
**OUR LORD AND SAVIOUR
JESUS CHRIST;**

COMPREHENDING ALL THAT THE
FOUR EVANGELISTS

HAVE RECORDED CONCERNING HIM;

ALL THEIR RELATIONS BEING BROUGHT TOGETHER IN ONE
NARRATIVE, SO THAT NO CIRCUMSTANCE IS OMITTED, BUT
THAT INESTIMABLE HISTORY IS CONTINUED IN ONE SERIES,
IN THE VERY WORDS OF SCRIPTURE,

BY THE REV. SAMUEL LIEBERKUHN, M. A.

TRANSLATED INTO THE
LANGUAGE OF THE

OTOE, IOWAY, AND MISSOURI
TRIBES OF INDIANS.

BY MOSES MERRILL,

Missionary of the Baptist Board of Foreign Missions.

ASSISTED BY LOUIS DORION, INTERPRETER.

PART I.

J. MEEKER, PRINTER, SHAWANOE BAPTIST MISSION.
1837.

PLKAND.

(JOHN I. 1.) Plkanlhwnei eca lrlsko, etl eca Wdkuntl tokralsko, etl eca Wdkuntlra. 2. Swdra plkanuntl Wdkuntl akosca. 3. Tlkwra ukewyglhce awdo; klnl haskoniska tlkwra ukewyglhce onei nifan wdra. 4. Wdhseka heowe lne mdnei, wdhseka heowe lne nlhl awdonl ohva mdnei. 5. Etl ohlwa ohlngatl ohlwahe, ohlga woplaheskone. 6. Wdkuntl wdhseka eeu cehe, rya tva Cdn eklnei. 7. Swdra lpraga wdketlhl celsko, ohlwatlhl praga wdketl, wdhseka ukewyglhce ohlwatlhl meka kdhanic arlnl celsko.

8. Ohlwatlhl laskone, nokl ohlwatlhl wdkerl praga-tlnl cehenelsko. 9. Ohlwace meka wdhseka ukewyglhce mlel wdmndneinlhl ohlwa wdhenei. 10. Mlel wdmndneika lrlsko, jika mleufka awdolsko, nokl mlel wdmndneitl ekrkaskenunei. 11. Tlkwra atva nlhlka celsko, nokl tlkwra awetvanl etl henokl lnloskenunei. 12. Tlnl lnlhonei Wdkuntl ecincifa wakrlolsko, tlnl meka kdhanenei eca lnlo Wdkuntl ecincifa wakrlo: 13. Tlnl wdtwanlhl wdplka tlaskone, jika ero tlaskone, jika wdhseka nlhl tlaskone, nokl Wdkuntl nlhl tlra. 14. Etl eca ero lra krecelsko wewdkerwpenl mdnei (etl tlntlhce tlka hltve, Luca krlnuhce Eeifahe tlntlhce hltve,) nlce tva pesnuhce erwkanl mdnei, eca tva woklgw.

15. Cdn Wdkuntl Eeifa lrlpragatlñl ewdñlhec, okes-
kuhce etlñl ehñlñl clra wdhlkak, Hlcee hlketlke cen-
lhaska aa tora tñtñklhenei, aa tora ñlha ekelra aka.
16. Tlkwra pehce, erwkanuntñl epunuhce wdwdhewe,
etl petlñl takerohce. 17. Mosis wowdhonetl awdwd-
kerve, nokl tlkwra pehcetl, jika eca meka kla Cesus
Kryst tvwdhw. 18. Wdhseka wyarlhso Wdkuntl
lñlskenunei lra; Wdkuntl Eeifa esnuhce ñlñl klñl
Lnca trogw krlkrlmenunl, kla wdonl honl owlra.

EROHRA.

(LUKE I, 5) Harut eklnei Cwtea wdfakehe henei hva
ehuhñlhatra Wdkuntl woko wdhseka eeu Slkaryus,
Apya otłkohe atva tvaralsko; etlme atva Arun eklnei
eewfa lrlsko, etl rya Erisapag eklnei. 6. Enoka Wdk-
untl ñlñtl woklgw mdnei; wdrlea ñlñtl ekrlñl nifñce
mdneiwe. 7. Ecincifa nifawe kelrlsko, Erisapag ecin-
cifa nifanl akłsko, enoka jłklhcawe klra. 8. Etl klğ-
kacatl, Wdkuntl woko wdhseka woowetva Wdkuntl
nufñl kerwtl lrakreca, 9. Wdkuntl woko wdhseka
woowe tva oncatl cewdhonetl erljoka tlpányhe woowe
tva lra.

10. Erłjoka tlpányhe nyetl wdhseka ukewyglhce al-
hso wdñohenljenei. 11. Erłjoka tlpányhe nyetl Wdk-
untl wdwyetva eeu lñlñka, erljoka lewtñl ojro kontl-
cenyet. 12. Etl Slkaryus lñlñl wohunca hlñcahwa
ñlñra rłkweicentl. 13. Nokl Wdkuntl wdwyetva Nl-
heraskoneta ekak, Slkaryus, wdsñohenñl tendoneika;
tetlñe ecincifa wdñ teketonelk, etl rya Cdn lñerñlto.

14. Wyescifka rlkeneik; toneiska wdhseka rohu wyescifkinineik.

15. Wdkuntl tlntl ltlneik, ne jwca pacane hatu rltl-skoninei; Wdkuntl Onlhera pehce tva otoewnei wdhseka o hwtska. 16. Israin ecincifa tva okeca wdlwnei rohu Wdkuntlnl kontohwd kreca wdhenei. 17. Etl toreke mdnei, Eryus onlhera tva tlhka swdragkanei, lnca wdheneinlhl ecincifa nlnc wakrlonei tlnl, etl jika wdnloskone retlhl glpatl pehce erlkwel wyhetl; Wdkuntl Eeifa ceca wdhseka kekrwjt u wyhetlnl. 18. Etl Slkaryus Wdkuntl wdwy e atva oketlnl, tontonl ehlp-wfa clra, wdhseka helka ltwtu, hentlme eklragka.

19. Jika Wdkuntl wdwy e atva pehe oketlnl, Kaprain eklnei merak, Wdkuntl entohlkehwd nye merak; tera nlhl kecemeneak, worlka pehce onlo rekece hlrlnl johv onyik. 20. Etl caa lnloho tltl hva egkaca klhatu eca wdlrpeskone, hva egkaca tlhanei nokl eca mekanl kdheskone jahaka. 21. Etl wdhseka Slkaryus lketlnei wdhtlhenei gegce cewdhonetl onye lhawahwskwne.

22. Nokl lhawahwtl wokeca rwjlka, wemlnlmdnei ltlnei woplaheneilsko eca wdlrpeskone cewdhonetlntl tlkwra ketlenl akalsko; etl eca wdlrpeskone kljo. 23. Etl klgakatl wowe tva rwjt e, etl cekrltvwd kralsko. 24. Etl hva nlha ekelra etlme Erisapag heifklnei, pe gltu wokenlholsko, etl klelsko, 25. Wdkuntl kljo henkrlo hva eu lntcekr l wdfa nlhl werojetl hlmdnei henkerwga.

ETLNE.

(Luke 1, 26) Etl pe ejlkwatl Kaprain Wdkuntl

wdwye atva, Wdkuntl awdnl cenl eu Klrare tla, Nl-sarig lnei. 27. Megufka eu wdcehenl wdfa eu Cosip eklnei, Tapit oeifka tva lrwla cakelra, megufka kla rya Mare eklnei. 28. Etl Wdkuntl wdwye atva etl-cenl oketlsko, wyescifkaho, pe worekehuneik Wdkuntl enwrenlhak, enluk nlhl ererojekaskone. 29. Etl ltlcenl, hlncahwa cenlsko eca nlofka, tontonl eca lnlhl egka clra erlcenlsko.

30. Etl Wdkuntl wdwye atva Mare nlheraskoneta ekelsko; Wdkuntl pesnuhce erekerwkanlk. 31. Etl caa lnloho, ecincifa eu otorlkrleik wdfa erltoneik, Cesus rya lne rltlto. 32. Tlntlhceneik, Tlntlhce tor-enhl Eeifa lra eklnei; etl lnea Tapit onyei kelranlhl Wdkuntl onyei lra okrecachenlra. 33. Etl Cakup oke-ca tva elmu werwkanlnlra; etl werwkanunei ehufke nifanlra. 34. Etl Mare Wdkuntl wdwye atva klekel-sko, Tontonl kl ltlnecelranei, wdfa eu klpwfiskwne lra? 35. Etl jika Wdkuntl wdwye atva pehe kelsko. Wdkuntl Onlhera pehce atva lrekcaneik, Tlntlhce nlhl wotlnta tva erolnga lrekerlkaneik; klra wdonei tlkwra rltosnljahso Wdkuntl Eeifa eklnei.

36. Etl caa lnho, Erisapag ehwe atva lklhceke eka eifklnei: ecincifa nifa ekanlhask canl pe jlkwa eifkl-neilra. 37. Lrace tlkwrahso Wdkuntl rwelkaskone. 38. Etl Mare ekeklsko enofa wdkehunu Wdkuntl we-tva ltvera, tlka jaska lagkatlto. Etl Wdkuntl wdwye atva kekrlsko.

ETOWA.

(MATT. I, 18) Cesus Kryst tonaca clrakalsko; etl ehwnlhl Mare Cosip lroha cakelra, nokl koo ketokras-kone lranlhl Onlhera pehcetl ecincifa lkenelsko. 19. Etl ekunu Cosip wdhseka woklgw ekelra, nokl tehokaskone cakelra, pehce kljofka kekerwkl cakelra. 20. Nokl kdha erwkanl menlhl, lnlowe, elhu cahufatl Wdkuntl wdwy tva eeufketle, klekelsko, Cosip, Tapit oei-fka tva, retlme rakrltokra snljaca nlheraskoneta; heinklnenlhl Onlhera pehce lra. 21. Etl ecincifa wdfa etoneika, etl Cesus rya lrlnervetlto: wdhseka wdkek-rwgufanlhl kekrljawa wyhe wakrlkenei.

22. Ca ukewygl eklsko, tora wdrwkranlhl Wdkuntl nlhlhl ehenlhl egkatlnl, klelsko, 23. Wagtl lnloweho, megufka eu ecincifa lneneik, wdfa etoneik, rya Eman-ewin lne heneik, rya lrlpragineitl, Wdkuntl enwhlnlha lnei nokl aka. 24. Etl Cosip eketl nyecera, Wdkuntl wdwy tva tlkweklnlhl joecowa, etlme atva pehe krw-ga: 25. Ecincifa wdnnonlhl toskone otwdneke kegufaskone: etl rya Cesus lnehenei.

EGLTU.

(LUKE I, 39) Etl Mare hva retl nyerlhl mlcl rwtlhl humpahce tyelsk, 40. Etl Slkaryus cea tva tokolsko, etl Erisapag wekrlkelsko. 41. Etl cagkaca, Mare weklkenlhl Erisapag nlon cenl wohunca ecincifa otokrlnlhl eketl tvakwkw; etl Erisapag Onlhera pehcetlhl otoe-wlsko. 42. Etl okeskuhce etlnl, klelsko. Enluka nlhlhl ererokejekaskone; ecincifa otorlkrnlhlhl erokejekask-onena.

43. Tlmekanl akakonei, Wdkuntl ehv henkece?
 44. Lnlowehe, entakrlkenl horette nlhoca oheca, woh-
 unca ecincifa otohlkrlnlhl wyescifkanl tva kwkw. 45.
 Meka rldhac ererojekaskone, Wdkuntl nlhl tlkw-
 erekinei ekegkaneik. 46. Etl Mare elsko, Onlhera
 metva Wdkuntl rltufa, 47. Etl onlhera metva wenk-
 raja nlhl wyescifka. 48. Enofa wdkehunu Wdkuntl
 wetva, erojekekanhl elra ltl: etl nloweho, cake toreke
 wdhsaka olrlnei erojekaskone enklenra. 49. Tore-
 hce nlhl tlkwra eu tlntlhce wonkehufka; pehce rya
 tva lrak.

50. Vwdkrlhanhl pehesnu wekerwkanlnei wdhsaka
 kekrlcinei takerohce. 51. Lkrlce wakrlonl preha ltlif-
 ke; nlce rotlke hotl kekrlkenl retlhl wwa rlwdhe.
 52. Tlntlhcenhl lmenanhl kohu cenl wdhe, kerwtl
 wdca nhl tlntl krece wyhe. 53. Krlnenhl tlkwra
 pehesnu epunhce wyhe; tlkwra tohce ratlhl aa hros-
 ka kekra wyhe. 54. Israin wdkehu nu heokejl, eca
 eklhl wakrlgw. 55. Lkcwdhewe eca swdra, Apra-
 hlm nlhl oeifkatvako elnu klswdryenei. 56. Etl
 Mare pe tne enonylsko, etl ocewe wdkra.

EJLKWA.

(LUKE I, 57) Kljo Erisapag hva kekrljewaca tlhel-
 sko etl ecincifa wdfa tolsko. 58. Etl allisanhl ehwa
 atvako Wdkuntl nltotuhce nloneilsko; ukewygl erlk-
 wei wyescifkinei. 59. Etl cagkaca hva ekrarlpununt-
 hl lcenei wojku tlkenei ecincifa nlhl keoneitnl; etl
 Slkaryus eklnei, lnc rya tva wwdkehu lra. 60. Etl

ehw nlhl laskonineika elsko, nokl Cdn oklninoik. 61.
 Etl pehe klnei, wora tva rya klneskenuneik. 62. Etl
 lnea wekemlntlka, rya tlkwra lnehe cerlnl. 63. Etl
 nlmprlgkl wdwklha wdketlsko, etl wdklha wahelsko,
 rya Cdn eklneneik, etl kewygl wdgtl heneilsko.

64. Etl ohra erwlsko, jika talga tljewa, etl ecalsko,
 jika Wdkuntl rltufalsko. 65. Etl wdhseka ukewygl
 alhsanlhl nlherlrnei: etl tlkwejtstl lnei ndoneike Cw-
 tea mlel tva rwtltl hufa ukewyglhce eta nlhl rlhohanei.
 66. Tlkwra ehenei ukewygl nlowenlhl nlce rotltl wdk-
 rnei, klneisko, Ecincifa tlkwra clrana ca? etl Wdk-
 untl nva tvaka enomdneilsko.

67. Etl lnea Slkaryus Wdkuntl Onlhera tva pehce-
 tlhl otoewmdnei, etl tora tvwdrwkranlhl, klneilsko,
 68. Israin Wdkuntl atva rltufa nlhato; wdhseka tva
 wakrltnl etl ekekrwkenl wyhe. 69. Tapit oeifka tv-
 atl tlkwra eu prekahce wekekrjewa wdwdeko ceca
 wdwdeko; 70. Tora wdrwkranlhl e atva wnl eca ln-
 lhl, plkanlhwni swdragkaka: 71. Peskone wdwde-
 rwkranlhl, jika wowyifanlhl tlkekrjewa wwdhetnl;
 72. Lkewdhewe tlkwra pehce wokerlnlhn wdwdeon-
 tvenl, lkekrlecanlhl krlgwtnl, 73. Aprahlm jlkaheve
 eca kerlhakaskonehce enlhl, 74. Wdwdeotlwenl wd-
 hseka wowyifa wwdnenlhl tlkekrjewa wwdhetnl,
 nlherlrskone Wdkuntl ecowdnetnl, 75. Ekrljul ni-
 fhce woklgohce ecowdnetnl tltl heu vve lva ukewygl.

76. Etl eeifa snljo, tlntlhecnlhl tora wdrwkana atva
 erekyeneik: wwa erwjtun trketvatnl Wdkuntl rlkep-
 lkanu Mndnenei. 77. Wdhseka tva wekekrjewa nlh-

lŧl tawdhwfa wdhetnl, hewdrwgufnlhl Wdkuntl wd-
wdkepathl, 78. Wdkuntl nlhwa watnlhlko; swdra
twwdhw plkanuhce ohlwa wdwdkecewe, 79. Ohlŋa
tlmenaulhl ohlwa wdhetnl, etl wea erolŋa tlmenanl-
hlk, mŧl pelcenhl tlnn wwa wdwdhewethl. 80.
Etl ecincifa notrlsko, gŧpatl keneskwne hwlsko, wdhs
eka tlhka wanlha etl cekrakelrlsko, Israin nlhlŧl hva
lŧlifke klhatu.

EJLHMU.

(LUKE II, 1) Etl hva retlhl klŋkace, etl Sesur Dk-
ustus eeake rawdhe, wdhsaka ukewyglhce rya wdwdk-
dhenei tnl wdhsaka okerleanlŧl ukewyglhce rya wd-
wdkdhenei tnl. 2. (Rya plkand wdwdkdheneitl Syr-
eneus cenokanl eu Sirea lnei erwkanl menuntlra.) 3.
Etl cenanlŧl ukewygl rya wakwdkdhenei tnl lhenei.

4. Etl Cosip cenl eu Nlsarig lnei, mŧl Klrare lnei
tlra etvwdrlŧl, mŧl Cwtea lnei, Tapit cenatva Pagra-
him lnei etlŧe (Tapit ocifka tva twwdhwce aka.) 5.
Etlne Mare eklnei lrwŧa cakelranl tokra, rya wakwd-
kdha tvanl, ecincifa lnece olsketvec. 6. Etl kragkat-
lee ewdulhatl hva kekrljewaca tlhenl. 7. Etl ecincifa
plkanuhce wdŧa etolsko, etl muŧkeraska owatnl, etl
joŧkace worweinei wtvlsko; cerotlŧl akahanl joolsko.

8. Wdnoce lketl wdhsaka mŧl swdra wdmeneinei,
hlha kerowa tlŧcewd wdnoce krŧketl mŧlinei. 9. Etl
wagtl, Wdkuntl wdwyce tva kanhlŧl lŧlifke, Wdkuntl
tlhutl atva alhlŧl ohva wyŧe; etl nlherageinei. 10. Etl

Wdkuntl wdwyę atva nliheraskonewere wekelsko: wy-
escifka rketvanl worlka pelce onlonta ketvanl akak,
wdhseka ukewyglhce nhlhltraneik. 11. Tapit cena tv-
atl hvaca treketonva Wdkuntl wekekrjewa Kryst ekl-
nei. 12. Etl tera wetl clrawetleneik: ecincifa mufka-
raska wwatlnei jofkace worwca rotltlfa esrokratneik.

13. Etl ohrhce Wdkuntl wdwyę tva nhlke wdhseka
rohuhe mufkre ko wdcenei Wdkuntl rltufkineilsko,
klneilsko, 14. Wdkuntl tlntl wolu kelrahso lkune
wou, mleufke wopehce, wdhseka ukewygl ewdpeninei.
15. Etl klkace Wdkuntl wdwyę atvanlhl wdkekerw-
kinei mufkre wdkrlnei, wdnocę lketl wdhseka nhl
klekeklneilsko, Kljo Pagrehim ewentatlho lnelsko, tl-
kwe wdkanlhl hlhltnl Wdkuntl ewdhwfa wdwdhelnlhl.

16. Etl mekrhahce lrlnelsko, Mare, Cosip aka, ecin-
cifa nhlka jofkace worwca rotltl hufa werokraneilsko.
17. Etl ltl rwjtunei, etl cincifa nhlhl tlkweklne alhsa
wanlhl onlo wyheneilsko. 18. Etl wdnocę lketl wdh-
seka nhl orlkineik tlhl onei ketgl kanl oneilsko. 19.
Nokl Mare tlkweklnei ukewyglhce nlec rotlke wdkrlnl
watgwmdnei tnl. 20. Etl wdnocę lketl wdhseka nhl
hltkrlnei, tlkwra okerlnvwe hlhlwe ukewygl ltlwe, nd-
owe hatl Wdkuntl rltufunlha kalragso lkunehce wou
eketlnei. 21. Etl krarlpunyeu epojwwanei wojku ton-
to mlginei ecincifa nhl keonei, rya Cesus lnehenei,
otokunuskenuneitl Wdkuntl wdwyę atva rya lnehenlhl,
swdrlnei henei.

EKRARLPUNE.

(LUKE II, 22) Etl klhanyeu herlka, Mosis wowdhonetl wdkeo kejewa, cenl Cerwsariin atl lnei lhenei, Wdkuntl kewdhilneitlnl; 23. (Wdkuntl wowdhonetl atva tlka wdkdhenei oneitlnl, plkandhce eitonei wdfatl Wdkuntl wetva eklnei tlnl.) 24. Etl rwcagkl nowa rwcaifa okana nowa tlnl lagso Wdkuntl wokonei, Wdkuntl wowdhonetl tva kljonce. 25. Etl ndowehe, Cerwsarim atl wdhseka eu nlha, Simeun rya eklnei; wdhseka woklgw, Wdkuntl kecowa ekrljnl niffhce, Israin enlhltl enlpe heneica wakrltvemenl: etl Onlhera pehce lheca.

26. Etl Onlhera pehcetl ekekwdhwfa elsko, wea tva etlheskwne lranlklnl, Cesus Kryst ltce wdhwfa henei. 27. Etl Onlhera pehce lra wdonl ce wdhetnlntl cenl: etl lkanlhl ecincifa Cesus eklnei akrnei lcinei, wowdhonetl wojku tlkinei keoneitlnl. 28. Etl Simeun vw-dhnye, etl Wdkuntl trwhincelsko, klelsko, 29. Wdkuntl kljo pehceke hlthl rwhlcato, eco warlkece: 30. Ijtl metva wekekrljewa wdwdrlkeo lreketlnei, 31. Wdhseka ukewyglhce erwjtl wdrketvanl; 32. Etl Israin wdhsekanlhl kero wyescifikinei ohva eu wdhseka Wdkuntl onloskenuneinlhl ohlwa wyhetl.

33. Etl ecincifanlhl tlkweklnei Cosip ehw nlhlko ketgl kanlolsko. 34. Etl Simeun wdrltufalsko, etl ehw nlhl Mare kyeklneilsko, lnloho, Israina wdhsekanlhl trohu wdcakaeneinokl pehe krece wdhenei; rljenlhltl wetle menlthl: 35. (Honca, nlce retva tiska mlhe gracia ata repohenca akanei,) wdhseka nlco werwkanl

rohu ekekwdhwfa wyhetlnl.

36. Etl henofa tora wdrwkanl eeu nlha, Panwin eklnei ewfa, okeca Asur wekineitlra; sklhlce ekelra, megufka nlhltl wdrwka ekunu plne jlhm enomdnei kelra; 37. Etl plne krapunu krarpune lkune towa enofa lrwgufke hwlsko, Wdkuntl ceatva rwgeheskonlhce, Wdkuntl ecowa hlncce nlca kaonl Wdkuntl wdkeroha lrljtu nifa hlha kerowa.

38. Etl eketlhce etl cenl, Wdkuntl rwhince swdra ln, Cerwsarim atl wekekrljewa krltvemananlhl ehenl kewyglhce wokerlsko. 39. Etl Wdkuntl wowdhonetl atva tlka onei ukewyglhce kejewanei, etl Klraretl cenl Nlsarig lnei wlhwwe etowdkrlneilsko.

EKJDFK.

(MATT. II 1.) Cwtetl cenl Pagrahim lnei Cesus tonei tlra, Harut hva wdfakehe nlhltra, etl nloweho, wdhseka glpatl pew wdhw wdhwnei Cerwsarim atl cenei, 2. Kllnei Tlntlnlhl Cws wekinei wdfakehe ketwwanlhl? peklha tva pew wdhw liketve jehve, hentwhince tva nlhincewe. 3. Etl Harut wdfakehe klwdnloncenl wohunca, hlucahwa cenl Cerwsarim enlhltilka ukewygl.

4. Etl Wdkuntl woko wdhseka totoho wenlhl wdkwnga nlhlko ukewygl towdhe rwjtu, etl we-wdha Kryst tlntltoenlca wekelsko. 5. Etl okerlnelsko, Cwteatl cenl Pagrahim lnei tlraneik: tora wdrwkranlhl kljo wdkdheneic, 6. Etl Pagrahim mlet Cwta lneitl, Cwtatl cenl huncanlhl wotwdne eeunteraskonineik: teratl wdhseka werwkanuhce

eeu etlce lhawaneik, Israina wdhseka wentlkes-
rwkanunei. 7. Etl Harut wdhseka glpatanlhl nl-
hwo towd-herwjtú woklgohce wewdha tlnlra pe-
klha tle. 8. Etl Pagrahim etowara wyhelsko; kl-
wekelsko. Trlwenl ecincifa woklgohce ocaweho;
etl esrokrawe onkerl cewehe, henka ewdtlnl hl-
twhinea tlnl.

9. Etl wdfakehe nlonei lrlnelsko: etl wagtl,
peklha pew wdlhw kontltanl, tore wekemdnelsko,
ecincifa tlnltnlha mufkre rotvlhce etlkegwenl.

10. Etl pekdha ltnei kerohce wyescifk epunuskl-
nunei. 11. Etl okwdnei, ecincifa nlhl ehw krlto-
kramenl ltnei, etl kwihu krewdnei etl trwhincinei:
etl woew wakrwa rwjtunei wdnufkahe okonei,
mlgigkl jwca, plne jerl jokl hatl nowlml okonei.

12. Etl Wdkuntl ekerawlhe Harut enuftl eto
wdkrlneiskone tlnl ehlnea wlhe, etlaskone konto
wdkrlnei. 13. Etl kelkrlnei wohunea, wagtl nlho,
etl Cosip Wdkuntl wdwyé atra okeca ehunea,
kleka ehunea, nyenl ecincifa nlhl ehw nlhlko to-
kranl Ecipt enuffl wdrvwere, ecoreketlheca klhatu
etlhyewere: Harut ecincifa nlhl cahetlnl wcaneik.

14. Etl nyenl ecincifa nlhl ehw nlhlkw tokranl
hlha Ecipt enuffl wdrvlsko. 15. Etl Harut ca kl-
hatu etlhyewlsko, Wdkuntl eca tva tora wdrw-
kranlhl orlkanlhl swdragkatlnl, klelsko, Ecipt e-
nuffl heiftl metvahakrvwd.

16. Etl Harut wdhseka glpatanlhl erogatlnei
ecowaskenunei ekerak, ndgkecelsko, etl Pagra-
himatl cenlifa alhsanlhl ecincifa ukewyglhce ca-
wdhenatlnl rawdhelsko, okewaifa plne nowanlhl
klhatu, wdhseka glpatl woklgohce wewdhanlhl

hlwa kltraka ekanhlh, swdra klhatu hecahelsko.
 -17. Carame tora wdrwkanl tlka rwkanl orlkanhlh
 swdragkalsko, klelsko, 18. Rama tl hoeu nlonei
 nltwketl ijtne hontlmenu, Racin ecincifa wakrl-
 hlka menl, kenl haskenunie lrjtuskwnele.

19. Nokl Harut ca rwjtu, wagt u nlo Cosip E-
 cipt enufatl Wdkuntl wdwye atva een kete ehun-
 ca, 20. Klekelsko, Nyeant ecincifa nlhl rwganl
 elw nahlka Israina mlet tva eto wdkrvere: ecin-
 cifa cahe kehenlhl tneik. 21. Etl nyeant, ecincifa
 elw nahlka, Israina mlet tva wdkralsko. 22. No-
 kl Lkeraus lncu Harut onyetlhl okrecaka ewdra-
 ca nufkwlsko: plkanliso Wdkuntl lunca menl
 ekerame erlce: erlwatowdnl Klraretl helsko: 23.
 Etl cenl eu Nlsarag lnei etl henyewlsko: tora wd-
 rwkranhlh tlka rwkanunei orlkanhlh swdragkatlhl,
 Nlsarag owdhseka ekhineik, ekanhlh.

WEKRAPUNU.

(LUKE II, 40) Etl ecincifa notralsko glpatl
 keneskwnelhee hwlsko, werwkanl glpatl kanl nl-
 ce tlwyew: Wdkuntl wopehee atva lkrecelsko.
 41. Lka tva plne kerlhee Cerwsarim etl hesnu
 owe atl wowdnei kekonei etl hesnu owe. 42. Etl
 plne krapunu lkune nowa kela, Cerwsarim atl
 kekonei wojku tlka onei etl hewalsko. 43. Etl lva
 ukewyglhee kejewa, etl hltkrve, ecincifa Cesus
 nlkare Cerwsarim atl cehwskwne; Cosip elw
 nlhlka ewdhwfaskwnlwelsko.

44. Nokl wdhsaka wdtokranhlh rotl wdmdnei
 erljineisko, lva graca mdnnei; etl wora tva nl-
 hlhl oca chlnei wdhsaka wewdhwfa nlhl tiska. 45.

Etl wea rwelkineik Cerwsarim atl hltoel lrlnei.
 46. Etl klkgaca, tline euntlhl Wdkuntl ceatva tlnl-
 erokra, wdkwnga retlhl enowlmenl, wdnlo menl
 eca wewdha menu hatuo. 47. Etl eca woplawd-
 he pehe wokeca hatu onlhl, nloneike kegdkal n-
 loneilsko. 48. Etl ltlnei wdhtlheneilsko: etl ehv
 klekelsko, Heifatlgkanl jowdwdrlowe? etl wagtl-
 nlowe, nlnee hakrltokra horeca kenrwelkawik
 wdwdkerojkonewe.

49. Etl klwekelsko, Tontonl ontlcawe? eswdhw-
 faskonewe Hienkl wowwetva hlontlnl johvonlhat-
 lrl? 50. Etl tlkweklntlhl eca wopraheskenuneil-
 sko. 51. Etl enowlkralsko, Nlsarag lnei etl hene-
 lsko, etl eca wowamdneilsko: nokl ehv eketlnlhl
 elmu nlce rotlke kegwdneilsko. 52. Etl notra-
 ke glpatl kenekwne wenogce hatu olsko, Wdku-
 ntl nlce ogsotlntlmndneilsko wdhsakanlhl tlska.

WEKRAPUNU LKUNE EUFK.

(LUKE III, 1) Etl Typereus Seslr werwkanuh-
 ce menlhl plne krapunu lkune gltu nlhltra, Pdn-
 teus Pyrat mlel Cwtea lnei lra rwkanlsko, etl Ha-
 rut mlel Klrare lnei lra rwkanlsko, etl hegofa Pi-
 rip mlel Itewrea, jika mlel Trakonytis lnei lra we-
 rwkanl menelsko, etl Rysaneus mlel Lpyrene lnei
 lra rwkanlsko. 2. Lnus jika Kaepus Wdkuntl wo-
 kowdhseka totoho lra walsko, Cdn eklnei Slkaryus
 eeifa wdhsaka tdlka wdmenei ewdnlhatlra,
 Wdkuntl eca tva kecelsko. 3. Etl neeu Cdrton l-
 ei mlel hlfl prokl etlelsko, wdrwgufanlhl ekeplnei
 netl kwfa wlhetlhl wdkwnga mdnei, wdrwgufanl-
 hlhl kekrljewanatlnl.

(MATT. III, 2) Etl klelsko, Ekeplwera: Kryst wdhseka werwkanlhee cerwjtl. (MARK I, 1) Cesus Kryst Wdkuntl Eeifa worlka pehee atva plkanl. 2. Tora wdrwkranlhl tika wdkdhenei, etl lnloweho, wdwe metva jawdrhlk owa pehee erwjtl tora reketva tvanl. (LU. III, 4) Esaeus tora wdrwkanl wdwkdha tva eca tlka wdkdhenei, klelsko, Mlel tlhkomenunei een hd tlkso wdrahemune, Wdkuntl owa erwjtu ketvaweho, nufu rotlhee keoweho.

6. Hroka ukewygl oeweneik, lhamlkse mlkse eifanlhl kwca kre wyeneik; etl wdkecanlhl rotuf krewyeneik, owa elhenlhl owa pehee krewyenei; 5. Etl wdhseka ukewyglhee Wdkuntl wekekrlewa tva lthnei.

(MAT. III, 4) Etl swdra Cdn werlkekrlnei atva jofa tlhwleokahe wlonei ukewygl wakrlnei, wlhrwsra eperl ekrlperlhl: wwa tva nnglea hunca eroekelra, jika nlnei okane. 5. Etl Cerwsarim atl henelsko, Cwtea nlhl ukewygl, jika Cdrtn atl mlel alhl hutl. 6. Etl ukewyglhee ne Cdrtn lne etl kwfa wlhe, wdrwgufa nlhl wokrlkenei. 7. Nokl Plases jika Slteuses rohuhee kwfa kenei thl leinei ewdtlka, klwekalsko, Ilwl, wdklga wdhseka klnljl, wyawdreonvwe wohunahwa lsrwhlga rlcewe tenve? 8. Wdrwguf klne-rlkepljve ltlfke klra.

9. Aprahm lna hewe etl wdwkdenlhlra nlce rotlke erejkwaektra: caag khl jaha, Wdkuntl entoca retlhl Aprahm oeifka tva kreca wdherwkanuska okewanolsko. 10. Etl kljo engwa ndhwca tawawdhena, nd mlwotl pehee orlgeske

nuneitl, wawagenl paca wopanl.

(LUKE III, 10) Etl wdhseka nlhl, tonto heontlnlca aklnelsko? 11. Pehe klwekelsko, tlnlhl wonye hunca nowa lniska, enifa nlhl eeu okonto; wwa lnenlhka swdra koonto. 12. Pupricun jika kwfa kinei tlnl lelnelsko, etl Cdn kleklnelsko, Totoho, tontoeho tlnlca? 13. Etl klwekelsko, Tlnl lrekerleenywe atltlskonewera.

14. Etl mylketa nlhka wewdhinelsko, klnelsko, Tonto heontlnlca? etl klwekelsko, Wdhseka wyarliso werwprekaskwneweho, wdhseka wyarliso eca werogatlskoneweho; jika wekwye tlnl orekonvahso klswdra erveho. 15. Etl wdhseka Kryst krltvemenuncika, wdhseka ukewyglhce nlce rotlke Cdn Kryst Iranlelthe erlneika onelsko; 16. Cdn pehe wekelsko, ukewyglhce klwekelsko, woklgohce nehl onl kwfa rewe, nokl eu tlnlthe nlhl cehenei, lkwce kyhe lragso hlketwskaca nlnceneskwne lra; Onlhera pehce paca rlkwei onl kwfa renvetlnei:

17. Ekekrlnoe akrlnenye wdpwkagwce nom-ea pehce krlcekanl, wdpwgka gwretl ejnu woewtonei, hlretlhl paca elmu kegawaskwne etl wopanei. 18. Etl tlkwestlstl trohu eca woklgw wdhseka nlhlwl wdkwna.

WEKRAPUNU LKUNE NOWA.

(LUKE III, 21) Etl wdhseka ukewygl kwfa wlherwjtunei, (MATT. III, 13) Etl Cesus Klrare twwdhwana Cdrtun atl cenl Cdn enufatl, kwfa ketlnl. 14. Nokl Cdn ifa elsko, Tlkwra onl hentrlkece mera tekehenu kwfa henlske penwdra? 15. Etl Cesus pehe klnl klelsko, Kljohera hen-

keonta: tlkwra pehce ukewygl heontve johe wdnliha. Etl ekejtlsko. 16. Etl Cesus kwfa henei rwjtunei, netlwdohene kwlsko.

(LUKE III, 21) Etl Wdkuntl wdkerohenei, mlho erekoel. (JOHN I, 32) Etl Cdn woklgw helsko, woklgw henl orlkalsko, klelsko, Onlhera pegce mlho tvwdtoklnlho twhcagkl gkahce ltlk, etl aahce lrlkrece kljolsko. (MATT. III, 17) Etl wagtl, hdeu mlhoko wde. klhwlsko, Heeifa nlnee hakrla lranlhak, nlce etl henkerohce lranlhak. (LUKE III, 23) Etl Cesus plne krapunu tlne ke-lranuc.

WEKRAPUNU LKUNE TLNE.

(LUKE IV, 1) Etl Cesus Onlhera pehce oewlsko, Cdrtn ekehltkralsko, etl Onlhera pehce lra wdonl mletl wdhseka tlka omenanl etlnehelsko, (MATT. IV, 1) wdkuntlpskone ekrljnlhe kehetl-nl. (MARK I 13), Etl mletl wdnoc okane wdmn-ginei lra wdnhlisko, (LUKE IV, 2) lva krapunu towa wdkuntlpskone ekrljnlhe kehelsko. Hva ukewygl wdrwcajkone epojwlsko: epojwwa rwj-tufke etl hrlnelsko.

(MATT. IV, 3) Etl ekrljnl wdhekehenlhl etl he-nl, klelsko, Wdkuntl Eeifa teraska, ento ca retlhl wdpwgka kreca wdhekare. 4. Nokl klekelsko, Ca wdkdhinei, wdhseka wdpwgka snuhca rwca nl-haskenuneik, nokl Wdkuntl eea tva eca etvwd-hawanlhl. 5. Etl wdkuntlpskone cenl hunchce tltokrahelsko, Wdkuntl ceatva lhltlke gwratlhl. lrlmenu helsko, 6. Etl klekelsko, Wdkuntl Eeifa teraska, kohunto kekra ohwdneta; kljo wdkdhe-nei ttra, Wdkuntl wdweye tva wtlra ketl wdhenl-

hinei: nva wakraoenei hrewdleneika, gepl lraho ento arlkekroce snujahso.

7. Etl Cesus klekelsko, klwdkdhinei jika, Wdkuntl ekrljnlrskonineika ekelsko. 8. Jika wdkuntl peskonenl tokranl lhamlkjehce eu lhltilthe tokralsko, mlcl proklhce okecanlwl wekemlntlsko, wokrlhetl kanl ekemlntlsko, (LUKE IV, 5) woge heskone eefketl proka ltlhelsko.

6. Etl wdkuntl peskone klelsko, Ca ukewyglhce erwkanl teneika, wokrlhetlhceka ukewygl: ca ukewyglhce lnenl hamenei, wyare ohlkw ehltwkanusk ohlkonelsko. (MATT. IV, 9) Kwlu kerlkrewdnu hesrwlinca rlcejreska ukewygl worekoneik. 10. Etl Cesus eklekelsko, Wdkuntl peskone, mlcekrle: caja wdkdhinei, Wdkuntl snuhca srwlinca snujaneika lneik, esnuhce eca rlkeontlneik.

(LUKE IV, 13) Etl wdkuntl peskone ekrlsnl wdhekehe rwjtu, etl etohra rwlrlsko, (MATT. IV, 11) etl wagtl nlo. Wdkuntl wdwyce atwa wdkeonljineitlwl leceneilsko.

WEKRAPUNU LKUNE TOWA.

(JOHN I, 19) Etl ca Cdn woklgwke lrlsko, etl Cerwsarim atl Cws wekinei awdonei, Wdkuntl woko wdhsaka jika Repyts wekinei, wyare ndha ewdrawdheneilsko? 20. Etl okrlkanl keplkeskonelsko; nokl okrlka, Kryst lraeiskwnika. 21. Etl jika ewdheneilsk, Wyarera? Eryus lrasne? Etl klelsko, Lraeiskwnika. Tora wdrwkanlhl lrasne? Etl klwekelsko, Ifa.

22. Etl jika kleklhelsko, Wyaresneca? cewdwldhenlhl hewokerltvenl. Tlkwrl rlkekrleca? 23.

Klelsko, Mlel wdhseka tlhka wdmeneitl hden
erwelka mnginei celmenak, Wdkuntl owa tva
rotu owere, Esaeus tora wdrwkanl tlhkaa swd-
rako. 24. Etl, cewdhenlhl Plrases wdsekinelsko.

25. Etl ewdhinelsko, kleklnelsko, Tlhkanl
kwfa wdrl rmdnei, Kryst lrasneskwne lra,
jika Eryus lraiso, jika tora wdrwkrlnhl lraiso
lrasneskwne lra? 26. Cdn pehewe kelsko, klels-
ko, Nehl onl kwfa wdhl: nokl eeu lsuljatl etl-
nye, eswdhwfeskwnewe: 27. Lra, hlce hlketlke
cenlhask aa tora henkemdnei lra, lkwce kyhe
atva lraiso lltwjaca nlnee neskwne lra. 28. Pa-
glpara twdwwenlhlsko Cdrtn atv ohenetl, Cdn
ekwfa wdhenyetl.

WEKRAPUNU LKUNE GLTU.

29. Etl ahufka Cdn Cesus etlhwah ltlsko, etl
klelsko, ltlweho Wdkuntl tlhklifa jwa atva, clra
wdonl mlel prokl wdhseka wdrwgufanei wdwd-
kepanye. 30. Ehlhlhl clra wdhlkak, hlceei hlke-
tlke wdhseka eu ce tora henkemdnei ehlhlhl: aa
tora nlha ekelra aka. 31. Nokl ehlpwfaskwne:
Etl Israin ewdhwfaneitlhl, lraice nehl onl kwfa
wdhl mdneitlhl.

32. Etl Cdn woklgw henl, klelsko, Onlhera
pehee mlhoko wdtoknumhw twheahkl gkahce ltlk,
alhce lkrece. 33. Nokl ehlpwfaskone: etl nehl
onl kwfa wdhltnl cemenl, swdra klifka swdra
Onlhera pehee ltoknumhw lrljtnaik, etl lkrece
kljonei, swdra Onlhera pehee onl kwfa wyhenei.
34. Etl ltlka, clra Wdkuntl Eeifa lra woklgw hl-
ka. 35. Jika, noeuntlhlhl, Cdn ulei nyei, wdhse
ka lroke nlhl nowa krltokra.

36. Cesus mdnei nlhatl ltlneyiwe eklelsko, Ltlweho Wdkuntl tlhklifa jwa atva. 37. Etl wdhseka lroke lnlhl eca nlolsko, etl Cesus ohrl lrlneilsko. 38. Etl Cesus lltve ohra mdnginei wltlsko, etl klwekelsko, Tlkwra osrohecawe? etl kleknelnsko, Rlpy, (eca praga lneitl Wdkonga totho lnei nokl aka.) tlntlrl menuca? 39. Klwekelsko, Cehwwenl ltvera. Lrlnei etl tlntl menu ltlneilsko, etl hvakl tokra nljineilsko: pe ltokend atrace.

40. Een Cdn eca nlonlhl klra olraralsko, Lnltrw rya eklnei Symun Petur hegofa helrlsko. 41. Etohce eenl Symun eklnei ekrokralsko, Mesyus lnei herokraweka, eca praga lnei Kryst lne nokl aka. 42. Etl Cesus enufl wdtokraralsko. Etl Cesus wdtl cenl kleka, Symun rera Cona lnei eeifa, Sepus rya lralneneik, eca praga lnei ento lnenokl aka.

43. Ahufka Cesus Klrare nufl ewdratlce, etl Pirip erokralsko, ohra mdneita ekelsko. 44. Pirip cenl hunca eu Pagsata lnei etlware, Lnltrw Petur lnei enoke kaetlwarewe. 45. Pirip Naglnein eklnei erokralsko, etl kyekelsko, hentrokra rwjtvika Mosis wowdhoneta tvetl, jika tora wdrwkranlhl wdklhenlhl Cesus Nlsarag awdhseka anlhl, Cosip eeifa. 46. Etl Naglnein klekelsko, Tlkwra pelcehso Nlsarig twwdea lhawantlea? etl Pirip kyekelsko, cehwnl ltra.

47. Etl Cesus Naglnein lwha ltlsko, klelsko, Ltlweho Israin ewdhseklhce woklgw, werogatl hatu niflheck. 48. Naglnein, klekelsko, tlntla eswdhwfa? Cesus pehe lnei klekelsko, Pirip rekewdskonetlra nel mlwotl orlge kohu tlnlja lre-

tlk. 49. Naglnein pehe klekelsko, Rlpy, Wdkuntl Eeifa rerasne lra; Israina wdfakehetva. 50. Cesus pehe klekelsko, nlel mlwotl orlge kolu tl-snuje lretl, ehlnlhl klra meka rldha? Toreke tlntlhee lrljtlhra. 51. Etl klekelsko, woklgo woklgohce oreketk, Torel Wdkuntl cenl atva erekoei lrlstlneik, jika Wdkuntl wdwye atva mufkre wdrnei etl lltokanllhwnel wdhseka Eeifa lkretlnenei.

WEKRAPUNU LKUNE JLKWA.

(JOHN II, 1) Etl etlne euntlhl, cenl Kana lnei mlel Klrare ttra, otwdnce kekonei, etl Cesus ehwehlnha: 2. Etl Cesus kekonei, wdhseka lroke nlhlka. 3. Etl nejwca tlneitl, Cesus ehw klekanufk nejwca nifkinei ekanufk. 4. Cesus klekelsko, Enduka wojku toh teonei? lva en koo etl heskone. 5. Ehwehlnhl wdrwtl klwekelsko, Tlkwra ereklnl wehso keoweho.

6. Ento woew hunca jlkwa etl wdkraneilsko wekonga jlkwa snuhca woew nenlsko, Cws wekinei kekregwnei catl wojku kljoneic. 7. Cesus klwekelsko, Ento woew hunca neowenl oewwlhewere. Etl ehl apunehce woewneilsko. 8. Etl klwekelsko, kljon tore howere, etl kekonei erwkanl nufllkineiwere. Etl kinei lhenei. 9. Etl erwkanl nufleewca ne nejwca oenlhl, tlntl wdrwginei ewdhwfaskonelsk (nokl wdrwtl awdrehonlhl ewdhwflsko) kekonei erwkrunufll otwdnce keolsko.

10. Etl kyekelsko, Plkanl onca lrlnei nejwca pehce tlhlra one nkl, lratl lllketlke peskonetlra onenl: nokl kacetl trel petlhl rlgehlra. 11. Cesusa Plkanuhce wahtu wou lraaka cenl Kana lnei, ml-

el Klrare lnei ttra, etl wotlntlhee Itlifkè lrlsko;
etl wdhseka lroke enlhl meka kdheneisko.

WEKRAPUNU LKUNE JLHMU.

(JOHN II, 12) Lratl Kapurnaum lnei ewdrisko, ehw krltokra, jika hegofa wyhe, wdhseka lroke nklka: ge etlneyeiskwne. 13. Etl Cws atl wwdnei kekoneie lskhece lhenei, etl Cesus Cerwsarim atl helsko, 14. Etl Wdkuntl ee atvatl cahkl, werwne menunei, tlhklifa, tweahkl hatl, jika mlgigkl ekekerwtl menanhlhka wdtlsko: 15. Etl weginca o rwjtu, ukewyglhee Wdkuntl ee atva rotltanlhl lhawa wdwdgalsko, jika cahkl, tlhklifa hatu; etl mlgigkl ekekerwta nlhka wlkwllho, jika nlmprlhka wdrwea akrjo wdkepa; 16. Etl twcahkl werwmenlhl klwekelsk, Ca retlhl mll wdnerveta; Henkl ee atva worwne ee oskonewere.

17. Etl wdhseka lroke nlhl kegweilsko kljo wdkdheneie, Ce retva okewatlhl hentlaga. 18. Etl Cws pehe etlnei, kleklneisko, Wetle tlkwra ltle wdwdrlkewe, ca wdrlo hltvik? 19. Cesus pehe klwekelsko, Wdkuntl ee atva rwjejevare, etl tlne eu swdrahka kreca hlneika. 20. Etl Cws kl lnei plne krapumu towa lkune jlkwa Wdkuntl ee atva rwjtunei, etl tlne eu strwjtuni eeja? 21. Wdkuntl ceatva ehenlhl, ero atva lra wdkelsko.

22. Lraee cake pehe hufke, wdhseka lrokeenlhl tlkweka kegweilsko; etl tora wdrwkranl etlnei meka wdkdheneisko, Cesus eea weklhlhka. 23. Etl Cerwsarim ewdnlliatl atl wwdnei hva kekonei ttra, tohu meka kdhenei, wehtl won mdnei lthneika. 24. Nokl Cesus wenyekonelsko, wdhseka ukewyglhee wewdhwfac; 25. Etl wdhseka

tlkwinkineil eraskonlhcelsko, wdhseka tlhka rw-
anunei wewdhwfac.

WEKRAPUNU LKUNE KRARLPUNE.

(JOHN III. 1) Prasesa wdhseka een nlhakel-
ra, rya Nikotemus eklnei, Cws werwkanl elra:
2. Swdra hlhatl Cesus enufitl celsko, etl kleka,
Rlpy, wdkonga Wdkuntl nufitl twwdrllhw hente-
wdhwfawik; wegtl worlunlmndnei wdhseka wyare
kdkoesry, Wdkuntl enonlha esnuhca kdkoowyhe.
3. Etl Cesus pehe kyekelsko, Woklgo, woklgoh-
ce erekak, wdhseka enohl wdhseka osnuhce Wd-
kuntl worwkanl atva ewdhwfanei.

4. Nikotemus klwekelsko, Tontoni wdhseka jl-
ka rwjtuntl enohl wdhseka o elranei? to tontoni eno-
hl chw otokanlhl, etl enohl to e elranei. 5. Ce-
sus pehe klelsko, woklgo, wok! olhce erekak, Wd-
hseka ne onenl jika Onlhera p heetlhl onenl eno-
hl wdhseka osnuhce Wdkuntl worwkanl atva we-
okanei.

6. Eronlhlitl wdtoenlhl eroneilsko, jika Onlhera
pehce nlhlitl wdtoenlhl onlheralsko. 7. Tlkwerek-
lhlitl wotltskonehere, enohl wdhseka rlosnuhcei-
neik. 8. Gglka tufkontohe ceratl egkalsko, poho-
tlhnye rhuolsko, nokl tufkoowdho, jika tufkonto-
wdkraka eswdhwfaskone lra: Onlhera pehce ewd-
toenlhlilka swdragklnei. 9. Etl Nikotemus pehe kl-
wekelsko, Tontoni klhlklnei elranei? 10. Cesus
pehe klekelsko, Israina wdkwnga tva snenlea, jika
ca weswdhwfaskone? 11. Woklgo, woklgohce,
erekak, Tlkwra hewdhwfawe lrahorkawe, tlkw-
ra hltveka woklgo elhve, etl tlkwra woklgo hewe
wdwdrhuo-konewe.

12. Mleufke tlkwrlhso oreketlhl meka hentlkd-haskoniska, mufkretl wohltlka tontonl meka hentlkdha elranei? 13. Wdhseka wyarahso Wdkuntl cenl tva etl heskwne lra, nokl etvwdhwnhl wdhseka Eeifa lrahso, Wdkuntl cenl tva tlmeunhl. 14. Mosis wdhseka mlet tlhka omenanhlhl wkl otltwanl, wdhseka Eeifa swdrako otkranei; 15. Wyarahso meka kdhaska hlneahwa owaskoninei, nokl elmu elhunei. 16. Wdkuntl mlet nlnee onc, Eeifa klsnuhea woko, wyarlhso meka kdha hlneahwa owaskoninei, nokl elmu elu kljonei.

17. Wdkuntl Eeifa mlet lrlcatlhl echeskwnik, nokl awdonl mlet kekrljewatlhl. 18. Wyara meka kdhaska lrlcaskenunei: nokl meka kdhaskenuneinhl wdraca rwjtunei, Wdkuntl Eeifa klsnuhea rya meka kdhaskenuneice. 19. Etl wdrleaclra wdonl, mleufka ohlwace, ohlwatlhl ranokl, wdhseka ohlmgatlhl aa krlhenei, wdo wenhl wdrwgufanie.

20. Wdrwgufa mdneinhl ohlwa eeifa, ohlwatlhl ceskonlheenl, wdo wdrwgufanhl ewdkenenlee: 21. Nokl wyare wdo wetva woklgohce onl ohlwatl cenl, wdo wetva Wdkuntl tlhka wdkerlea lra ltl wlhetlhl.

WEKRAPUNU LKUNE KEJDEK.

22. Etl hlketlke Cesus wdhseka lrokenhl tokra Cwtea mlet tva etl henei; etl enowdnye, etl kwfa wlhelsko. 23. Etl Cdneika Enun atl kwfa wlhene Sarim caea tlra, kletl ne toheie, etl leenenl kwfa wlhenei. 24. Koo Cdn ewhnga opaskenuneitlra.

25. Etl Qdna wdhseka lroke enlhl Cws enlhl tlka ecake keklnelsko, kekregw enlhltl ehenei.

26. Etl Cdn enufitl henei kleklnelsko, Rlpy, Cdr-tun atl enosnuja kelranl, woklgo rlrlecnl, lnloho. swdra kwfa wlhenye, wdhseka tohu tlnl henei.

27. Etl Cdn pehe klelsko, Wdhseka wyarliso tlkwra erleskwnenra mufkreko woko esnuhee.

28. Terawetl woklgo henvetlra, kl ehakl, Kryst lraheiskwnika, nokl tora cemeneika. 29. Enoko twdne lnenhl otwdne enlhira, nokl otwdne etlro hennhl lketlhye nlofka, wyescifkehcenl otwdne enlhl hd atva nlofka wyesci lketlhl egkaka.

30. Aa torake tlnlra kljonei, nokl mea kljon wencakanei. 31. Mufkre twwdhwnhlh lra wdpka nanye: mlenkewarenhl mlet wdhseka, etl mlet-sun ehelsko: Wdkuntl cena tvatl wdhwnhlh esnu wdpkananye. 32. Etl tlkwra ltl nlo hatu woklgo a, nokl wdhseka wyarliso lnloskone. 33. Tlnl ln owenhlh Wdkuntl eca woklgo erljko. 34. Lra Wdkuntl cehenl Wdkuntl eca tva atnl: Wdkuntl Onlhera pehee ekwnglhcenl okoskone, trohu oko. 35. Lnea Eeifa nlee ekrlo, tlkwra ukewyglhee nva tlwdke rwjtu.

36. Eeifa nlhl meka kdhanhlh elnu ehenei: nokl Eeifa meka kdhaskenunei nlhl ehú ltskenunei, nokl Wdkuntl wonlgke tva lheca kljonei.

WEKRAPUNU NOWA.

(JOHN IV,1) Etl Wdkuntl ewdhwfk Cesus wdhseka lroke wakrlo jika kwfa wlhenhlk Cdn alhlk Plrases nlo-neik. 2. (Nokl Cesus alhee kwfa wlheskwne wdhseka lrokenhlh lra owyhe.) 3. Cwtea kewdrlnl Klrare nufitl hl-tlra. 4. Etl Samarea lnufo henei. 5. Etl Samareatl cen-leu Syklr lnei etl helsko, Cakup moswa eeifa Cosip okrl-

konlhl cacatlrsko. 6. Cakup neooca tva lratlra; etl Cesus mlrwca ehunifaka neooca ehlrlmenlsko: pe orotunce nltlrsko.

7 Samarea enluka ne lkwcelsko. Cesus kyekelsko, ne okonta. 8. (Wdhseka lrokenlhl cenlwd wwarwma lrlnei tlrac.) 9. Etl Samarea enluka klekelsko, Tontonl aka Cwsa snekao jika nehenrlketl, Samarea enlukane, (Cwsa Samarea nlhlka, okeinkinei tlkwra kekoskenuneinkl.) 10. Cesus peheklekelsko, Wdkuntl woko nlhl eswdhwfaska, lra ereklnl, Ne tokonta; kl eswdhaskonen wdra, etl ne elmu ehu mdnei orekonolsko.

11 Enluka nlhl klelsko, weneea renifa jika neoocaka trohse, tlntl ware ne elmu ehu lsnesnujl ejlnlhl? 12. Cakup lncu hewe tlntlarahl neooca wowdkowe, jika aahce rltlmenu, ecincifa tvaka, jika wdnoce tvaka? 13. Cesus pehe klekelsko, Wyarlhso neca rltlnlhahso epwganeika: 14. Nokl wyarlhso neohlko henkerltuntl epwgaskone kljonei; nokl neohlko cehlnlhl neooca lne mdnei kljonei, elmu ehu nlhltl ewdprwprwnye kljonei.

15 enluka nlhl klekelsko, ne caa tokonta, enohl empwgaskone tlnl, jika ne ehlnaea hlceskwne tlnl. 16. Cesus kleka, Trekunu kewarlre, etl enoke ceweho. 17. Enluka nlhl pehe kla, Wdfa henifa. Cesus klekelsko, Wdfa henifa ejlnlhl rlmeka. 18. Wdfa gltuhl eelsroha tekunu kljonke rltokrasnujlka retvaskone: ejlnlhl rlmekak. 19. Enluka nlhl klekelsko, Tora wdrwkanusne erepofa. 20. Lkawdhewe lhamlkse canufke wdohincinei; jika kl eja, Cerwsarim atl whseka etl wdohincineiska kljon wdra.

21. Cesus klekelsko, Enluka, meka henkdhera, hva hwha, lhamlkse canufi kehso jika Cerwsarim etlhso, Henkl srwhincaskoneca. 22. Tlkwra srwhincaweka eswdhwfaskonewe; tlkwra hentwhincawika bewdhwfawe; Cws wekekljewa lra twdhwlsko. 23. Nokl hva hwha, etl kljonkelra, woklgohce wdrwhinca nlhl Henkl nlce meklhce trwhincinineik: Henkl klhkaenlhl hentwhincinineierlnl. 24. Wdkuntl Onlhera pehce; rwhinciniska nlce woklgohce onenl rwhincininei.

25. Enluka nlhl klwekelsko, Mesyus etlhwha ehlpwfa,

rya Kryst eklnei, tltl ceska tlkwra ukewyglhce wewd-
kanei. 26. Cesus klekelsko, Oreketlnye lra merak.

27. Etl ohra wdhseka lroke enlhl lkrenelsko, etl enlu-
ka oketlnyeik ketgdhka ltlneisko: nokl wyarahso tlkwro
orlce, jika tlkwraonl orlkeca ekaskenunei lra. 28. Etl
enluka nlhl nerlkw krlpanl, cenl towd herlsko, etl wd-
hseka nlhl klwekelsko. 29. Wdhseka eu cehwwenl ltve-
ra tlkwra ukewygl hlwwlhw wonkerl; Kryst eklnei lra-
klnl? 30. Etl cenl lhawrlnei etl heneilsko. 31. Wdhseka
lrokenlhl wdkerohemenuneitl Wdkwnga hunca wdrwca-
ra eklmenuneitlra. 32. Nokl klwekelsko, Wwa hlceca
lne lmdnei eswdhwfaskonewika.

33. Lrace wdhseka lroke enlhl klekeklneilsko, Wdh-
seka tlkwrahso rwca tlnl lkinei lcineinklto? 34. Cesus
klwekelsko, Wwa metva klraka, cemenlhlra wdkeontlhl
jika woowe tva hlketwjt tlnl lraka. 35. Klaskonewere,
Koo pe towotl wdhlhca, lnloweho, ljtł wakrwvere ere-
kvik, etl mlha wdtvere; wdhlhe erwjt glhcinei. 36. Etl
wdplglnlhl wekwe lneisko, elmu ehu nlhltl mlwotl to-
helsko; awoewnllhl jika awdplglnlhl enoke akosca wyec-
cifketlnei. 37. Etl klakanei meklnei, Een woewce eu
jika wdplga. 38. Teworyewskonenl lra rlpłgatlnl ewd-
rarek: wdhseka etlntł woewwenlh, etl woewwenlhl wo-
rlkekwa.

39. Etl Samaretuns cenl kletl trohu meka kdhenei, e-
nluka tlkweklnlhltl, woklgohic, tlkwra hlwhlhw ukewy-
gl wonkerl. 40. Etl Samaretuns lceneitl, enowdnye tlnl
lkwdnei; etl noeu etllylsko. 41. Etl rohu jika meka
kdhaneilsko eca tva nlhika; 42. Enluka nlhl kleklneilsko,
Meka henkdhawe nokl ejlnlhl tlwdwdoskonewe: heah-
ce henlhoic, Kryst lra hewdhwfa wdra, mleufke weke-
krljewa.

WEKRAPUNU NOWA LKUNE EUFK.

(JOHN IV, 43) Etl noeufke trlnu Klrare nufłł helsko:
44. Cesus aahce woklgohce helsko, Tora wdrwkanl cen-
okanl atratl walkaskenunei nkl. 45. Etl Klrare nufłł
kre, Klrare wdhseka enoheneilsko, Cerwsarim atl keko-

enlhltl tlkwra o ukewygl ltlneika; ukewygl kekonei lhe-
neic. 46. Jika Cesus Kana lnei mlei Klrare tla etl kre-
lsko, neonl nejwca onlhltl. Etl wdhseka tlnti eu etnl-
hlsko eeifa cenl eu Kapurnaum lneitl okekejeka eu.

47. Etl Cesus Cwtea twwdhwnl Klrare nufitl ce nlofka,
ewdrllsko, etl wdkerohelsko oewe wdrnl eeifa keperl-
hetnl kljo ca erwjtuhcec. 48. Etl Cesus klekelsko, We-
tle wagtl elrlstlskoniska meka hentl kdhaskoninei. 49.
Etl wdhseka tlnti nlhl wekelsko, Ecincifa henkecaskon-
eke ewdhwra. 50. Cesus klekelsko, Krlra, teeifa ereke-
hufka. Etl wdhseka nlhl Cesus eca tlkweka meka kd-
halsko, etl kralsko. 51. Etl ce wdkrake wdkehuna tva
wdkeplsko, kleklneisko, Teeifa erekehufk.

52. Etl wewdhalsko petufkecenl lra keperl. Etl kl-
eklneisko, Tlnune pekepenenlra tla, lratl ero tlhunu
lrwjt. 53. Lratl lna nlhl ewdhwfisko swdra tla Cesus
kleklnlhl, Teeifa erekehufka; etl eronhl meka kdhals-
ko, jika cwew proka. 54. Cira enohl Cesus wegtl wou
lrak, Cwtea nufitl wdhwnl Klrare nufitl cenl.

WEKRAPUNU NOWA LKUNE NOWA.

(JOHN v, 1) Hlketlke Cws kekoneilsko; etl Cesus Ce-
rwsarim atl helsko. 2. Cerwsarim atl tlhkaifa worwma
ce cacatl, nesroskamenu, Heprw eca lnenl rlsrlcenatl,
Pagasta lne lrlkruntl ce gltu nyewe. 3. Wdhseka ero gl-
neiskone trohuhce ceklra womenuneilsko; otl ijtl nifkin-
ei, otl jika mdneiskenunnei, otl jika lkrka tlnei, newjoca-
ca lketlmenunnei. 4. Wdkuntl wdwe atva maen nwsros-
ku nufitl henufk, newjoca hetnl; newjocahe hlketlke
wyatohce otvatl tlnti wdca nlhahso kenenufk; 5. Etl
wdhseka eu eroglskewne plne krapunu tne lkune kra-
lpune etlelsko.

6. Etl Cesus etleu ltlka, gehcetl swdra aka ewdhwfk,
klekelsko, keperlreinei rikosrk? 7. Etl wdhseka erogls-
neiskwne nlhl klekelsko, newjoca nyetl ontvanei tnl wd-
hseka henifanufk: ko ewdca lranhlhl wdhseka etlnti eeu
otvanuk. 8. Etl Cesus klekelsko, Nyenl omeea krwganl,

etl mdneita. 9. Etl ohracce wdhseka nlhl tlhkaskwne krecelsko, etl omeea krwganl mdneilsko: hva kletl hva wdhonetl. 10. Lrace kepehenlhl Cws kleklneilsko. Hvaka hva wdhonetl; omeea rakrlkentlmdneica peskonika. 11. Pehe klweka, Keperlmenlhl swdra wdnl, omecakrwganl mdneita efka.

12. Etl ewdhenelsko, wdhseka wya wdnlhl, Omeea krwganl mdneita ereklnlhl? 13. Etl keperlhenlhl wyawdofka ewdhwfaskonelsko: Cesus trwhlrae, wdhseka rohu etanlhac. 14. Hlketlke cewdhonetl tlnlba Cesus ltlsko, klekelsko, Ltlra, keperlrenei: enohv wdrwgufaskoneta, tlkwrawopeskonlhce lrekreca rlkenlhl jaha. 15. Wdhseka nlhl herlsko, etl Cws klwekelsko, Cesus awdonl keperlnek. 16. Etl lrace Cws Cesus erogatufkahenei, jika cahe kehenelsko, hva wdhonetl twwdone. 17. Nokl Cesus pehe klwekelsko, Henklka kacetl wlo lrace wlo. 18. Lrace Cws cahe lhwjakinelhso tlntrlnei, hva wdhonetl tlnl krlsnlskonec, nokl Wdkuntl Lnea lra ekekle, jika Wdkuntl ekehka kec.

19. Etl pehe Cesus klwekelsko, Woklgo woklgohce ereklwe, Eeifa nlhl tlkwrahso awdkehe oskone, nokl tlkwra ltl Lnea nlhl o: tlkwrahso Lnea nlhl ontl, Eeifa nlhl swdra onufk. 20. Lnea nlhl Eeifa nlnea krlone, tlkwra ukewygl omdnei tlhe: wlo tlnlthce hlonehl alhlhoe ltlhenlra, wohtl rltvenl. 21. Lnea nlhl tnei nyei wdhe, etl pehe ehu wyhe; Eeifa nlhlka egka wyare ehue erwkanuska egkane. 22. Lnea nlhl wdhseka wyarlhso wekerwkanuskoninei; nokl Eeifa nlhl wdhseka ukewyglhce wekerwkanuhce erwkanyhe: 23. Lnea nlhl wdhseka ukewygl tlhka kelkinei, Eeifa nlhl swdragklhe kelkineitlhl. Eeifanlhl kelkaskenuncitl, Lnea nlhl kelkaskenunci nokl aka awdcehic.

24. Woklgo woklgohce erekvik, Wyare eclnl oska jika cemenlhl meka kdhaneisk, elmu ehune, ca helrlcinei etl heskwne; oca alhlhl ehuhcatlhenei.

25. Woklgo woklgohce erekvik, Hva hwaha, etl kljon kelra, tnenlhl, Wdkuntl Eeifa ho nlhonenei; etl wyare

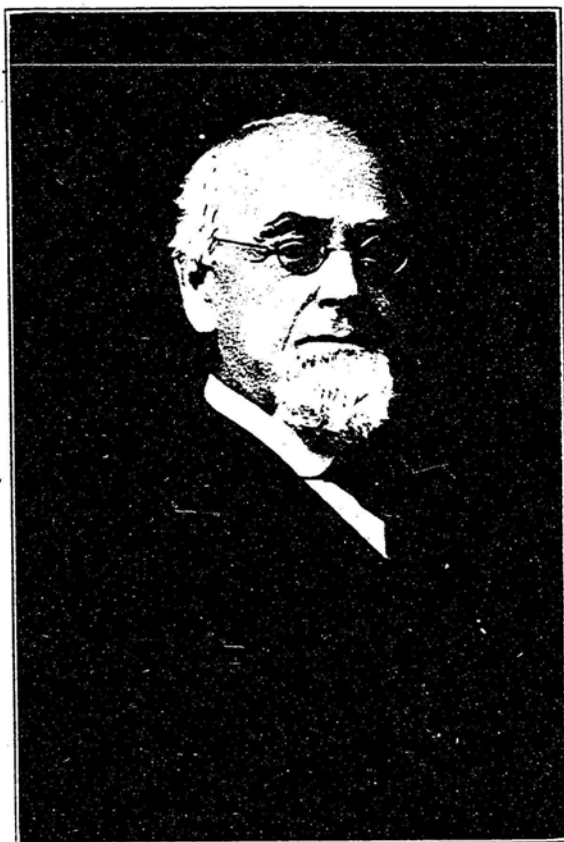
Inloska ehunei. 26. Lnea nlhl ehu lne mdneic; Ecifa nlhl ehu swdrl lne mdnei he; 27. Etl kla erwkanuhce he, wdhseka wdrwgufanhl hlncahwa owawlhe erwkanuska onlra, wdhseka Ecifa lrae: 28. Wdhtlheskwnewere: hva hwha nlja, melha rotl tlretl ho nloneic hwhak, 29. Etl pehe lhawaninei; pe tlhl owenlhl elmu ehu kljonei; etl wdrwgufa onei kelranl elmu hlncahwa owdnenei kljonei. 30. Tlkwra mewdkehehce hloskone: tlhka hlno lo wehketwkenl; wekerwkanl metva woklgo: mewdkehe hlwdkeheskwne, nokl Henkl nlhl tla, awdcemenhl.

31. Ero nlhl eca woklgw ne chlkekaska onifanlra. 32. Ecu etlntl eca woklgo metnl nlha; tlkwra woklgo meca lnhl meca ehlpwfa. 33. Cdn atl hewdrwe, tlkwra meca lra woklgohe. 34. Woklgo menie wdhseka nlhl wdhwskenunenei: nokl ca ehlnhl, rlkekljewa wetca ehrlnl jaha. 35. Tlkun ohlwa wdhseka; maeu ohlwa tvatl wyescifka rlkewetnl erlstuhce weklra.

36. Nokl tlkwra woklgo meca tlntlhce ekenlha, Cdn enhlhl alu: Henkl wdo hltwjtunca onkonhl, wlo swdra hlonke kla woklgo meca, Henkl cemenhl tl. 37. Henkl ero nlhl, cemenhl, woklgo mehekl. Ho atva tlntlhso rlnuoskonahceweka, tlhka lrahsa lrlstlskonewe. 38. Etl eca atva lrahsa lsneskwnewe: cehe nlhl lrahsa meca rldhaskwnewe. 39. Wdkuntl wdwdklha tva wekra owe-re; swdratu elmu hehutlnei erlawelsko: etl kla woklh-gome lraha. 40. Etl mera nlhl rlcwe erlaskonewe elmu erlhvetve.

41. Wdhseka nlhl wdme oskenunei eelkeenhl. 42. Nokl erepwfawe, nlce rotlke Wdkuntl nlnee rloskonewe. 43. Henkl awdonl hlceha, nokl entlno heskwnewe: wdhseka etlntl awdkehe eunceska erlnohewe nolsko. 44. Tontoni meca hentlkdhawica wdhseka nlhl rlkekelkawe, walkatl Wdkuntl nlhl twdhwul aa orlcaskwnewe. 45. Henkl nlhl retljatl eraskoneweho: ecu terljawe ewlnlha, Mosis hiskla, erlly elnlhl. 46. Mosis meca rldhawiska, meca hentlkdha wenolsko. 47. Nokl wdwdklha tva meca rldhaskonewiska, tontoni eca metva meca hentlkdhatve.

Samuel O. Merrill
No. 6. Gorton Place Rochester



Sumner Vance Merrill

No. 507
